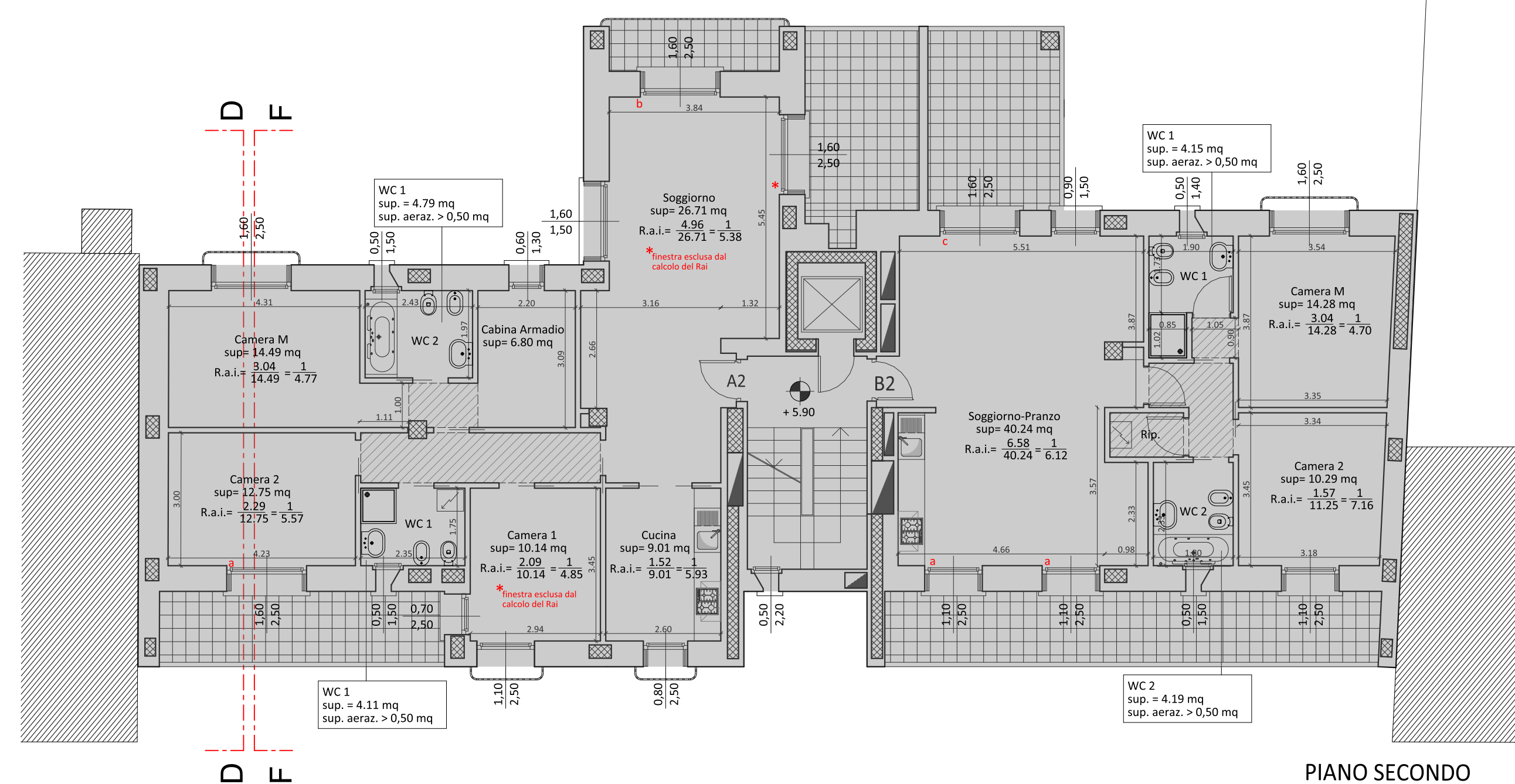
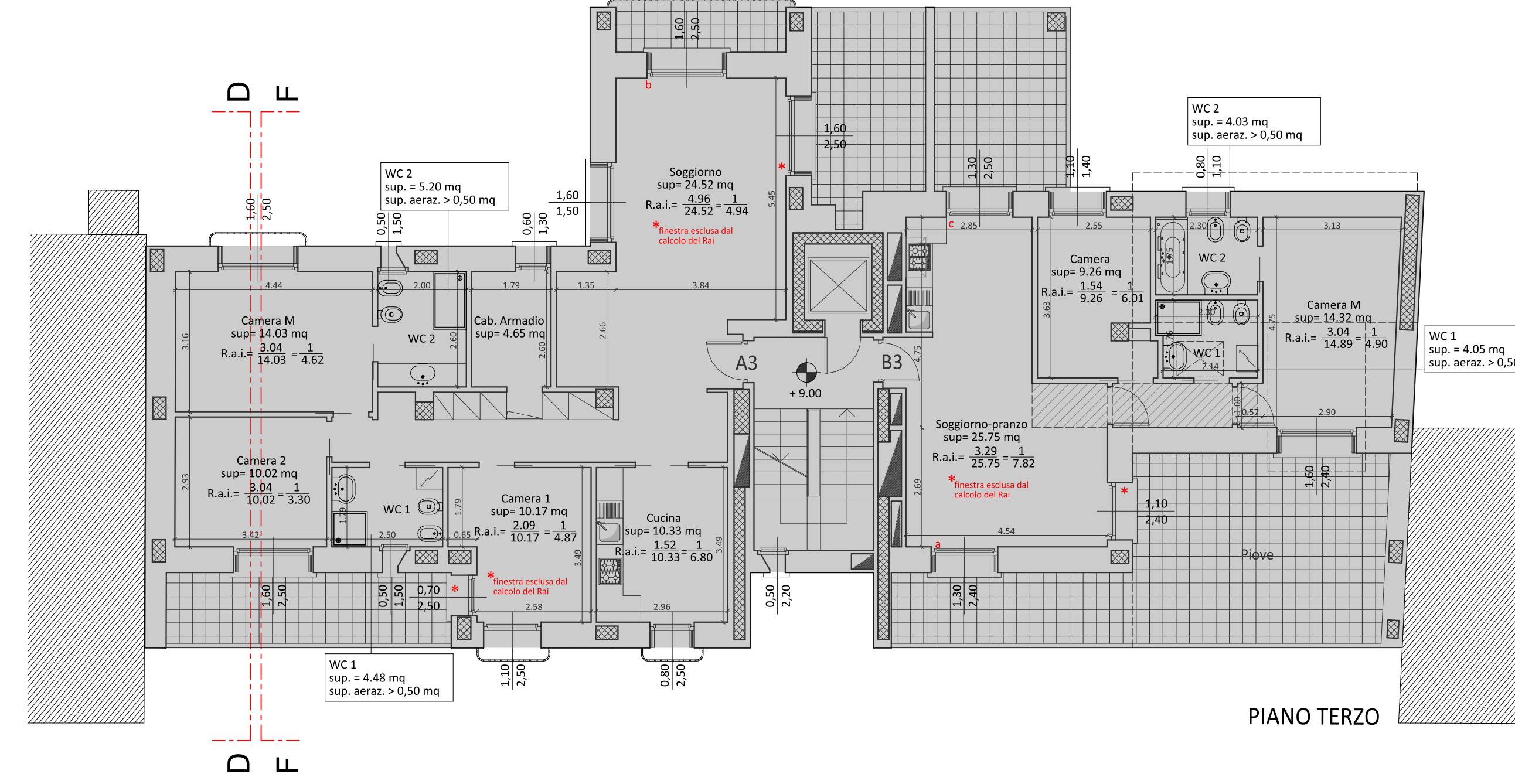


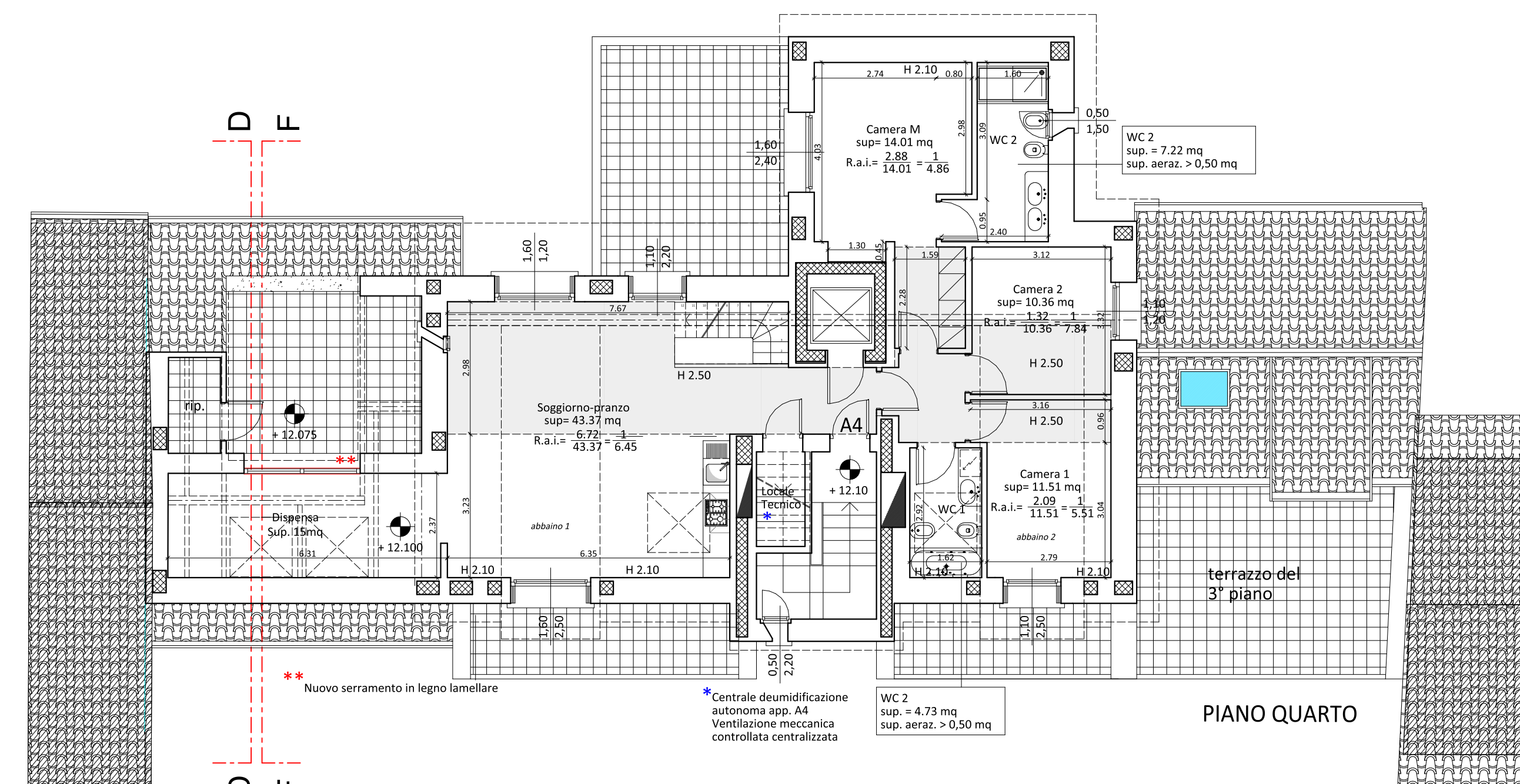
PIANO PRIMO



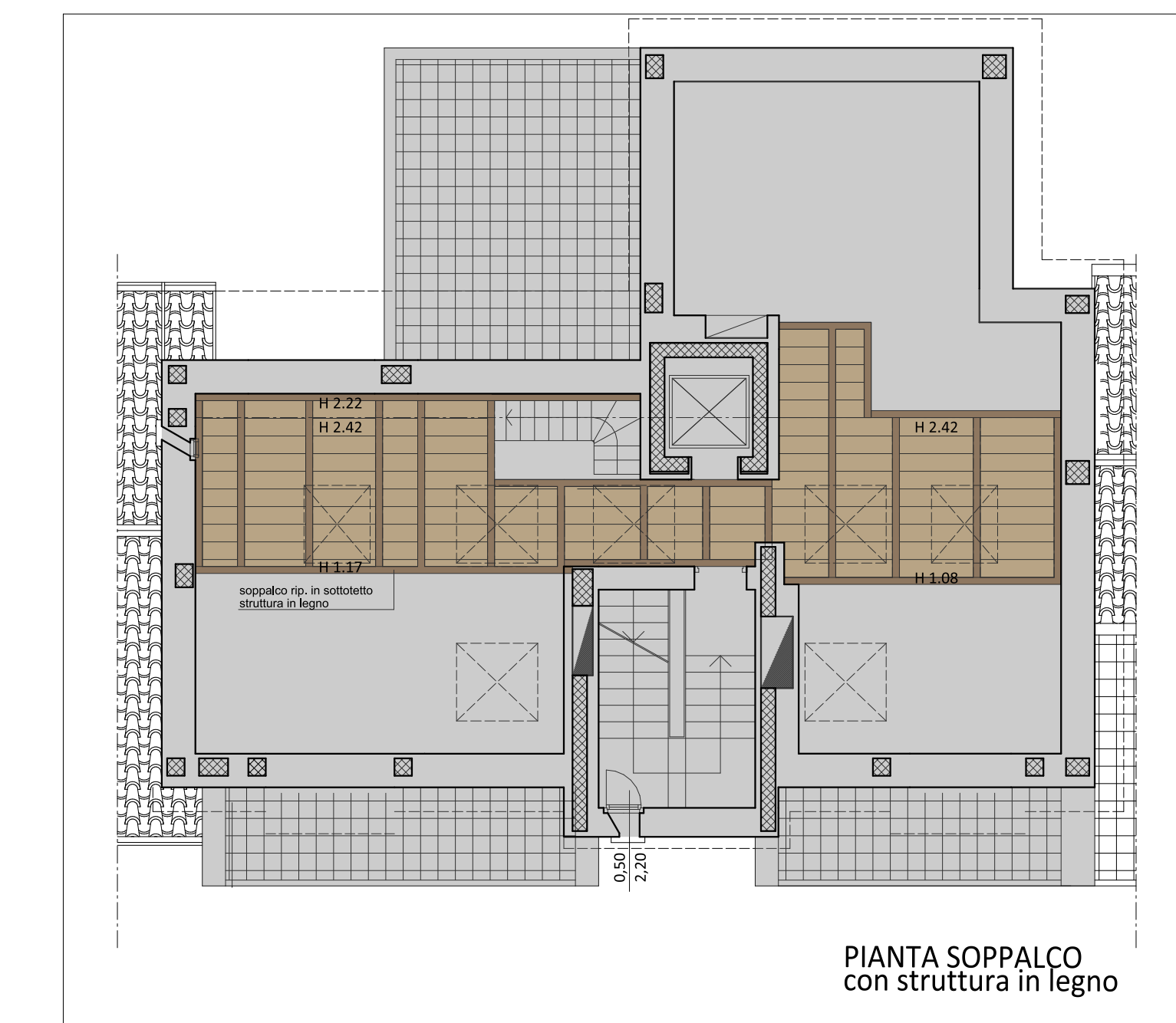
PIANO SECONDO



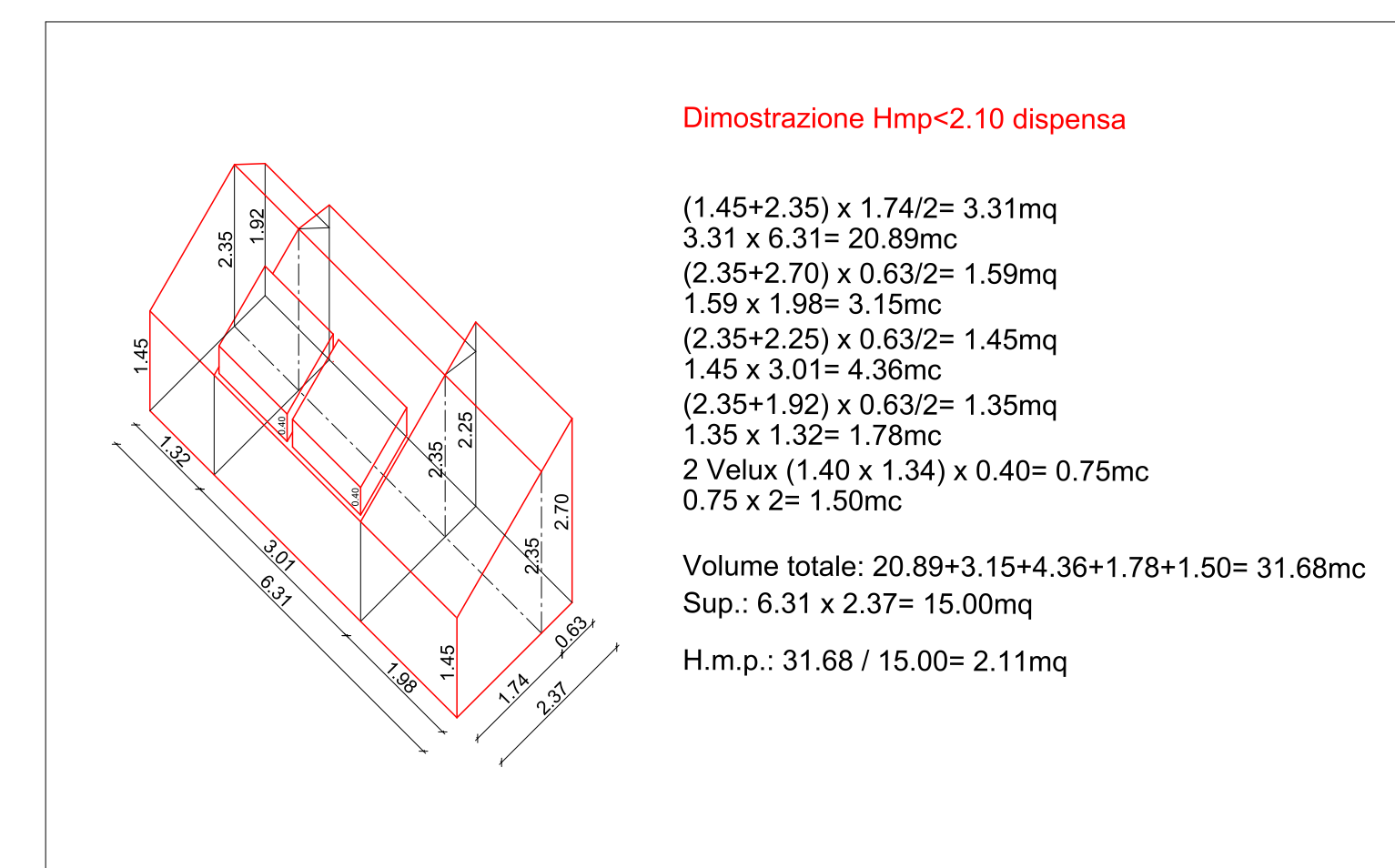
PIANO TERZO



PIANO QUARTO



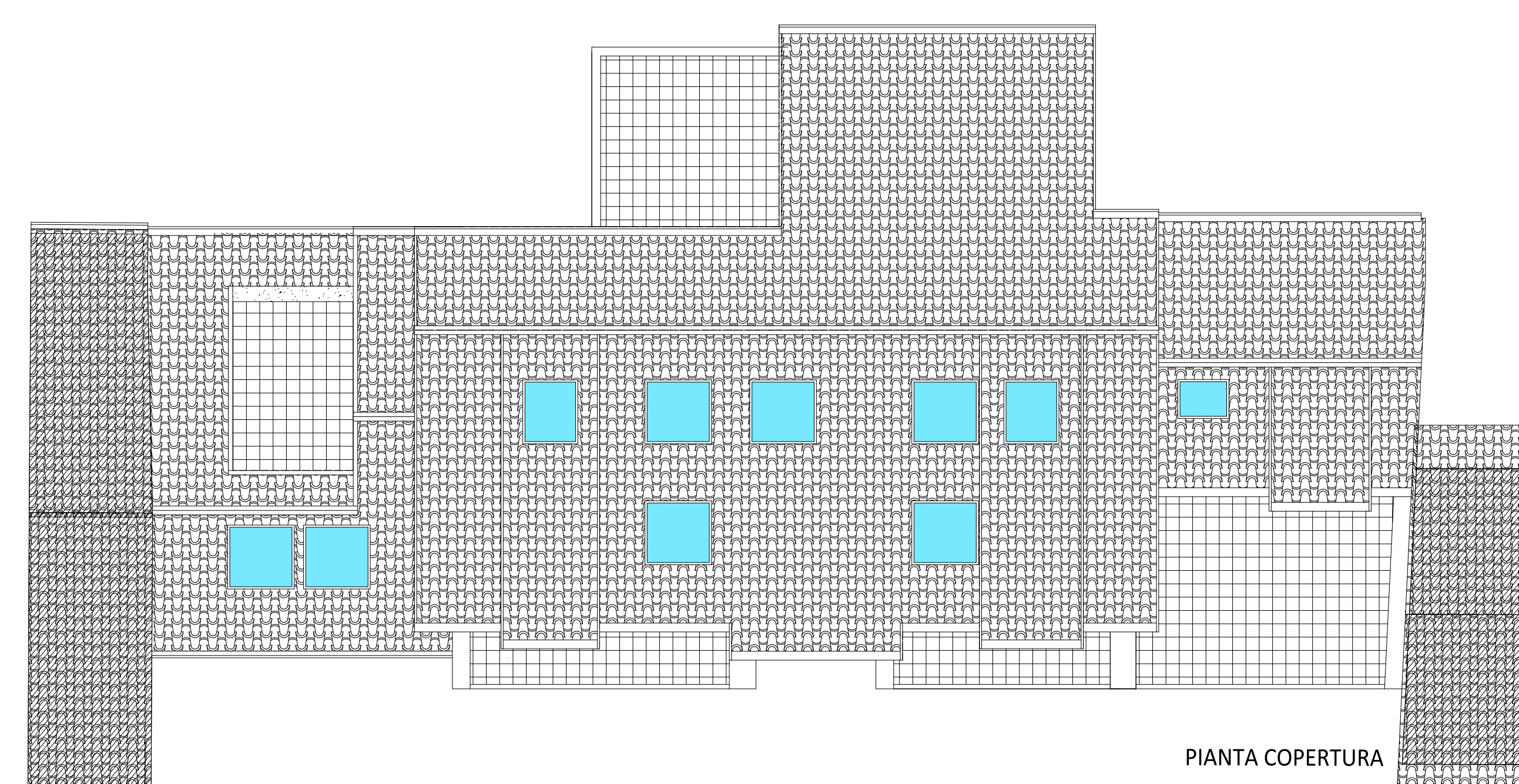
PIANTA SOPPALCO con struttura in legno



Dimostrazione Hmp < 2.10 dispensa

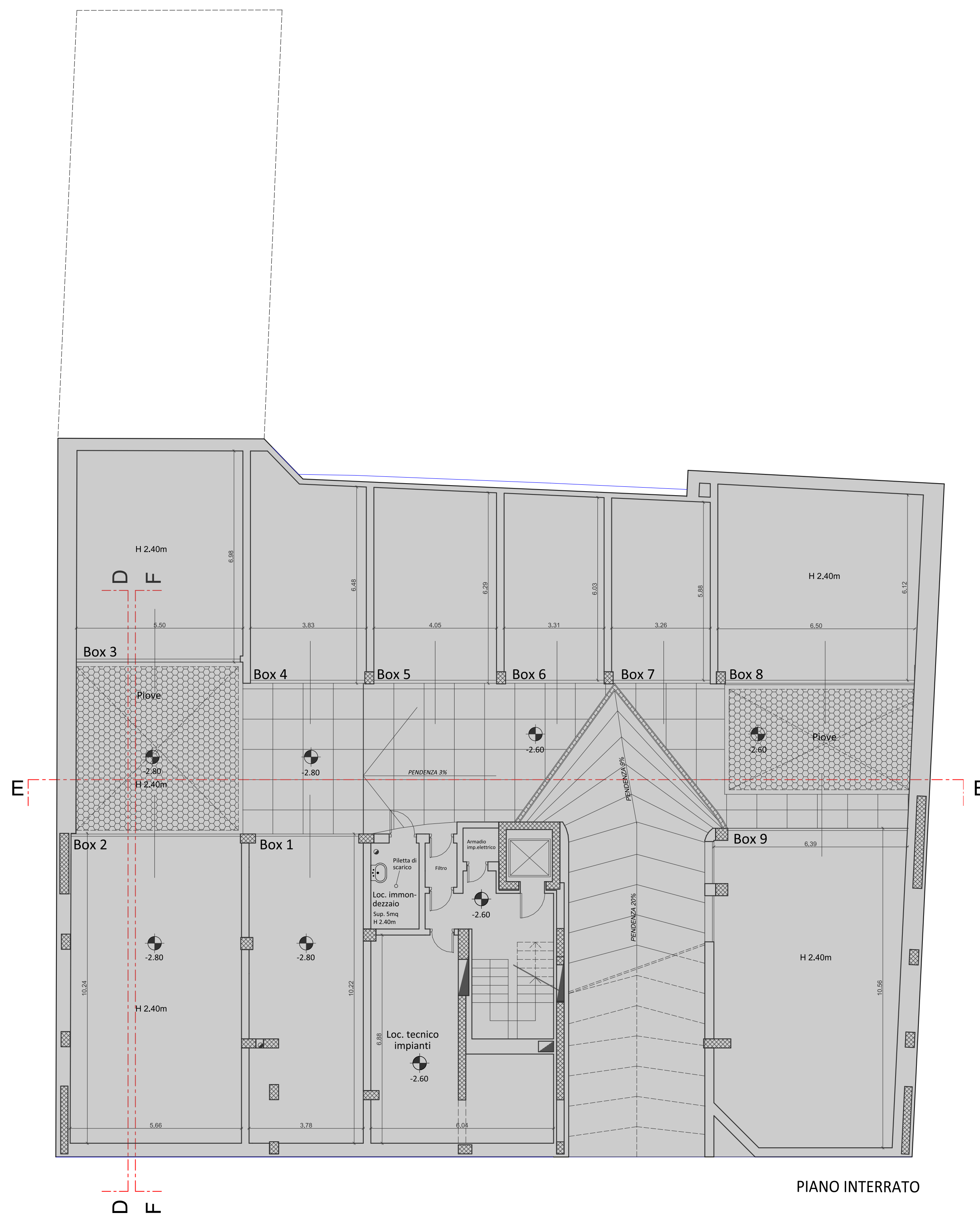
(1.45+2.35) x 1.74/2 = 3.31mq
 3.31 x 6.31 = 20.88mq
 (2.35+2.70) x 0.63/2 = 1.59mq
 1.59 x 1.98 = 3.15mq
 (2.35+2.25) x 0.63/2 = 1.45mq
 1.45 x 3.01 = 4.36mq
 (2.35+1.92) x 0.63/2 = 1.35mq
 1.35 x 1.32 = 1.79mq
 2 Velux (1.40 x 1.34) x 0.40 = 0.75mc
 0.75 x 2 = 1.50mc

Volume totale: 20.89+3.15+4.36+1.78+1.50 = 31.68mc
 Sup.: 6.31 x 2.37 = 15.00mq
 H.m.p.: 31.68 / 15.00 = 2.11mq

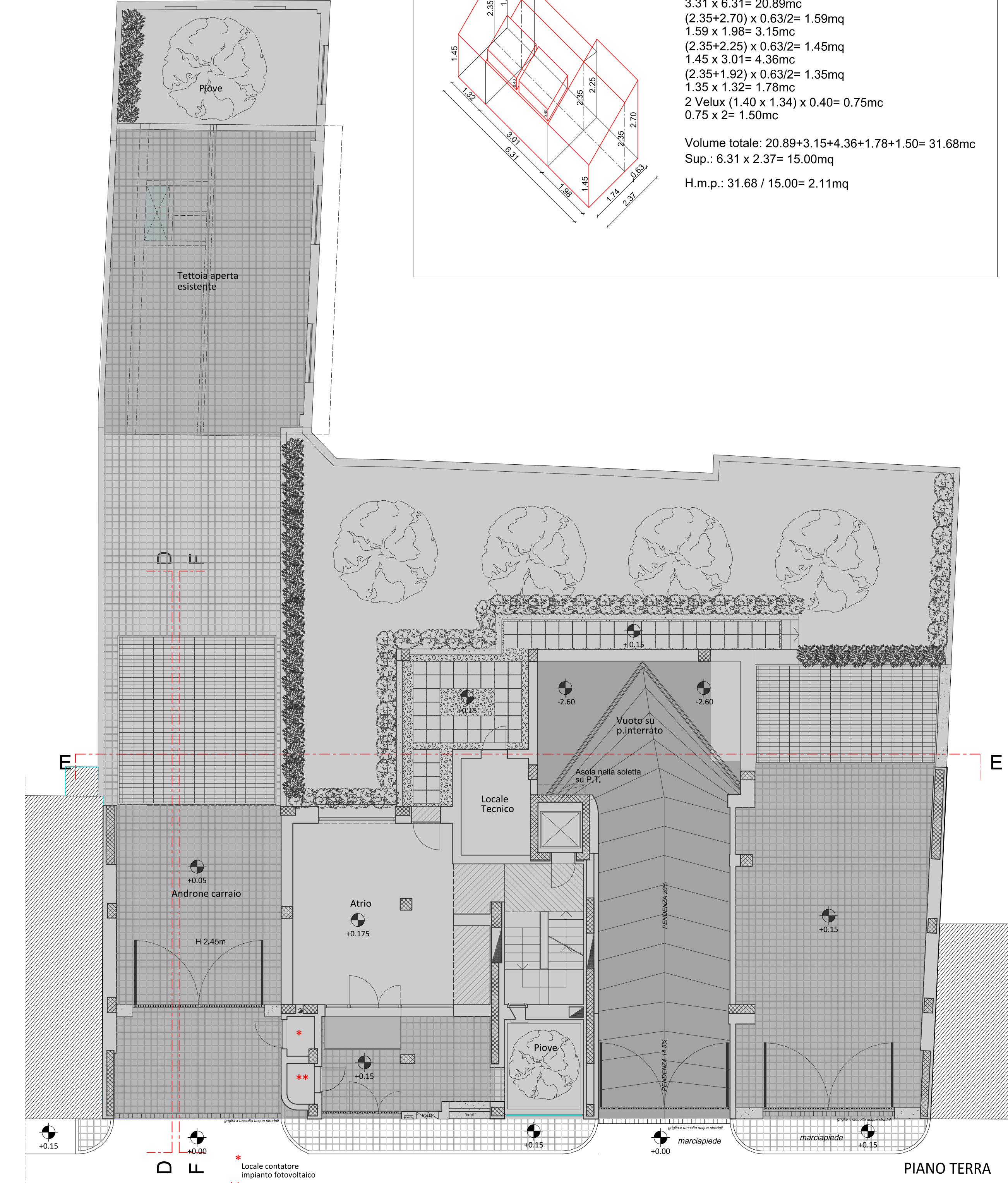


PIANTA COPERTURA

Invariato rispetto alla SCIA 735/19



PIANO INTERRATO



PIANO TERRA

via Moncenisio

PERMESSO DI COSTRUIRE CONVENZIONATO
 SLP di perequazione (mq 15) relativa al solo appartamento A4 dell'ultimo piano

STUDIO CARAVATTI e CRIPPA	MONCENISIO s.a.s.	6251MO	31	Data: Gen 2020
	Palazzina residenziale in Via Moncenisio, 13 - Monza	rapp. 1.100	rapp.	agg.
	PIANTE P. INTERRATO, TERRA, 1°, 2°, 3°, 4°, COPERTURA, DIMOSTR. HMP	rapp.	rapp.	
	PROGETTO	rapp.	rapp.	

